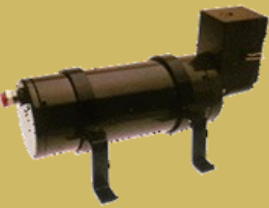

TEP 4000

InstaLube TEP 4000 is a spring loaded, piston accumulator which automatically pumps oil into the engine's main oil system the instant the starter is engaged.



Engines suffer severe damage when cranked in dry conditions, in particular at low temperatures, when the oil is thick and slow

to circulate. InstaLube TEP 4000 was designed to protect diesel and gasoline engines from this problem.

On starting, InstaLube immediately injects oil directly into the engine's main oil system until there is a build up of oil pressure from the engine oil pump. This operation is fully automatic. Lubricating the major engine parts before the engine is started reduces engine wear and increases reliability.

InstaLube is simple in design and operation but robust in construction to ensure a maintenance free life while protecting the engine.

InstaLube is supplied with a universal installation kit consisting of mounting brackets, braided hose and wiring harness. The standard build is either 12 or 24 volt dc and can also be supplied for air start applications. InstaLube has an oil capacity suitable for engines up to approximately 800-900 cu.in., For larger engines install two units.

the engine protector

INSTALUBE

Ready for Start-Up

The piston is held by the locking pin with the accumulator loaded with oil. The locking pin is released by the solenoid the instant the starter is energized. Oil is pumped into the engine until the engine oil pump pressure reaches 20 psi (1.4 bar), at which point the InstaLube is recharged

Technical Specifications

Oil Capacity:	24 fl. oz. (700 cc)
Discharge Pressure:	15-20 psi (1.0 - 1.4 bar)
Pipe Connections:	9/16" JIC
Pipe Work:	Flex Hoses (1) PTFE Stainless Cover 18" Long (45 cm)
Solenoid:	12 or 24 VDC
Dimension:	12.75" (320 mm) long 3.87" (100 mm) dia 7.5" (190 mm) high
Weight:	12.75 lbs. (5.8 kg)
Included with unit:	1 Hose 2 Mounting Brackets 1 Wiring Harness 54" (137 cm) long